



MANTA

19LFN88L



INSTRUCTION MANUAL

Introduction

Thank you for purchasing our LED TV / PC Monitor.

We hope you have many years of trouble free enjoyment from it.

Please ensure you read this user manual prior to attempting to operate the TV and keep it safe for future use.

INSTALLATION AND SAFETY WARNINGS

- 1) Position the unit on a flat surface avoiding anywhere which may be subject to vibration.
- 2) It is advisable to un-plug both the power and aerial during a storm to avoid damage.
Electrical surges causing damage to the TV are not covered under the manufacturer's warranty.
- 3) Avoid rapid changes in environmental or temperature conditions. Allow the TV to reach room temperature and avoid locating near heat sources, i.e radiators/fires.
- 4) Do not place naked flames, such as candles or night lights near TV.
- 5) Do not place ornaments or vases near the TV where liquid spillages could cause.
- 6) Do not locate the TV directly against a wall where it could restrict ventilation to the rear of the TV
- 7) Do not place the TV on or near appliances which may cause electromagnetic interference (such as TV or Hi-Fi Speakers) as these could cause a distorted picture or sound.
- 8) Batteries are a potential choking hazard. Do not allow young children to remove the battery compartment cover on the remote control.
- 9) There are no user serviceable parts inside this TV. Do not remove any of the covers, front or rear, that could expose high voltages from within the TV set.
- 10) If you intend to leave the TV for long periods of time, in the interests of energy consumption, do not leave the TV in standby mode, instead, unplug the TV from the power supply.
- 11) Never display the same image on the TV for long periods of time as this could cause a permanent after-image to remain on the screen. This is called 'screen-burn'.
This may also be caused by some channels displaying a static logo in the corner of the screen. Be sure that your chosen channels have constantly moving images to avoid this irreparable damage.

Warning



Warning
Risk of electronic shock
Do not open



Warning: To Avoid the risk of electric shock.
Do not remove cover (or back).
No user-serviceable parts inside.
Refer servicing to qualified service personnel.



This symbol is intended to alert the user to avoid the risk of electric shock, do not disassemble this equipment by anyone except a qualified service personnel.



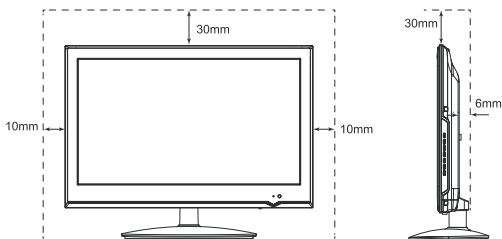
This symbol is intended to alert the user to the presence of important operating and maintenance instructions in the literature accompanying the appliance.

Caution

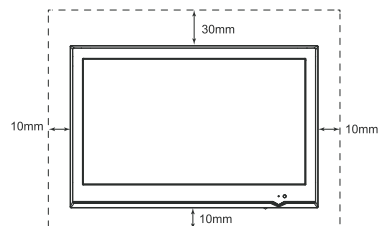
when installing the TV Against a wall Or Enclosed Area

Make Sure that your TV adequate ventilation, Allow enough space around the tv as shown below :

Installed with stand

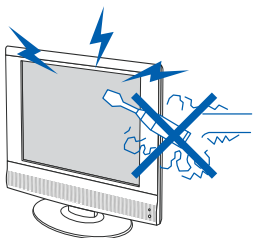


Installed on the wall



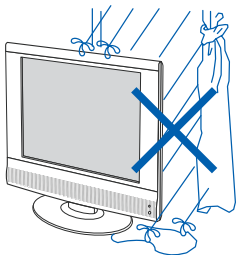
Allow sufficient space around the TV in order to help prevent excessive heat. Which could lead to early failure of some electronic components.

Caution



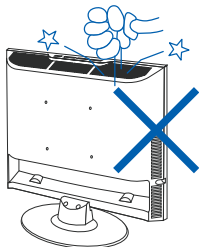
Caution

High voltages are used in the operation of this product. Do not cabinet back from your set. Refer servicing to qualified service personnel.



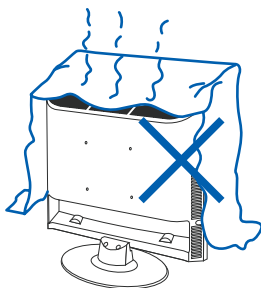
Caution

To prevent fire or electrical shock hazard, Do not expose the main unit or moisture.



Caution

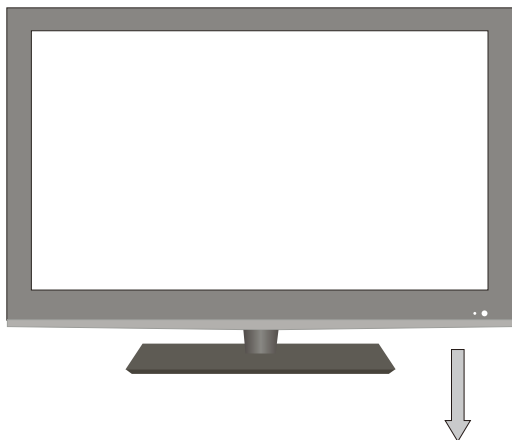
Do not drop or push objects into the television cabinet slots or openings. Never spill any kind of liquid on the television receiver.



Caution

Avoid exposing the main unit to direct sunlight and other source of the heat. Do not stand the television receiver directly on other produces which give off heat. E. g. video cassette players, Audio amplifiers. Do not block the ventilation holes in the back cover. Ventilation is essential to prevent failure of electrical component. Do not squash power supply cord under the main unit.

Main unit description (Apply 5 buttons)



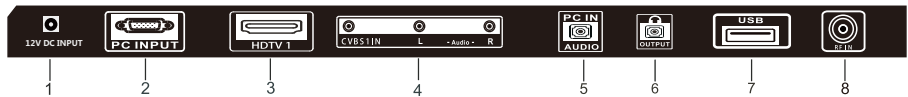
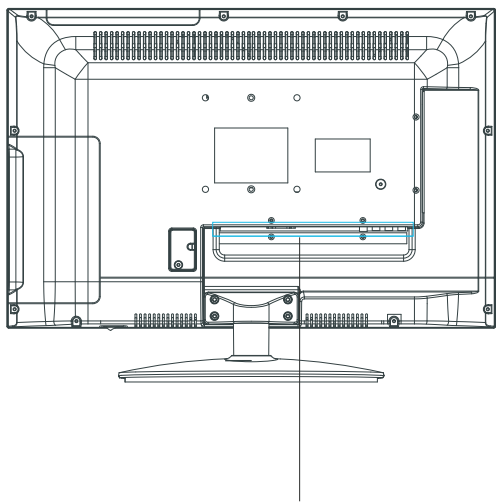
ITEM	BUTTON NAME	FUNCTION DESCRIPTION
1	STANDBY	Switch on the LED TV when at standby mode or vice versa.
2	◀ CH ▶	Press to scan through channels. To scan quickly channels, press and hold down either +/-button.
3	MENU	Press to bring up the main menu to the screen.
4	INPUT	Press to select the input source.
5	POWER INDICATOR	Show red in standby mode, show green when your TV is switched on.
6	REMOTE SENSOR	Infrared sensor for the remote control.

Note:

The effective receiving scope for the signal is 5-8 meters from the front of the remote control window, and 30° to the left or right side and 20° above or below the control window.

*** The product colour and shape may vary depending on the model**

Main unit description



ITEM	JACK NAME	FUNCTION DESCRIPTION
1	DC 12V IN	Connect to adaptor with DC 12V output.
2	PC INPUT	Connect the PC-RGB output jack of PC.
3	HDTV INPUT	Connect the HDTV output jack of DVD.
4	CVBS INPUT	Connect the Video input jack of DVD or VCR
5	PC AUDIO IN	Connect the Audio output jack of PC.
6	HEADPHONE OUTPUT	Connect to headphone.
7	USB SLOT	MEDIA PLAYER (connect to USB Pendrive to player Media file)
8	RF IN	Connect antenna or cable 75-ohm coaxial to receive TV signal.

Remote Operation



POWER: Press to turn TV set on or off.

MUTE: No sound by pressing this button.

0-9: Press the number to choose channel

-/-: Press more than median to select the channel.

RETURN: Back to the previous watching channel.

VOL-/VOL+: Adjusts the volume.

CH-/CH+: Changes the channels up and down.

DISPLAY: Press to display the source and channel's information.

TV : Press to select TV source

THUMBSTICK (▲▼◀▶)

Allows you to navigate the on-screen menus and adjust the system settings for your preference

ENTER: Press this button to confirm or to enter .

EXIT: Press EXIT to exit menu or sub menu of TV.

MENU: Brings up the main menu to the screen.

SOURCE: Press to select various input sources.

P.MODE: Switch the picture mode.

S.MODE: Switch the sound mode.

SLEEP: To set the sleep time .

Record Press to record TV programs in USB device. Make sure that the USB have a USB device before pressing the record button.

ZOOM Press to adjust the scale of the screen.

CH.LIST Press to brings up channel list.

Fav Press to open favorite channels.

EPG Press to show the Electronic Program Guide in DTV mode.

REPEAT Press to select REPEAT mode by None / ALL / One.

USB Press to media mode.

AV Press to select AV source.

HDMI Press to select HDMI source.

⏮ Press to skip the backward in storage mode.

⏭ Cancel function. Press to skip the forward in storage mode.

⏪ Press to fast reverse in storage mode.

⏩ Press to fast forward in storage mode.

⏸ Press to plays or pause in storage mode.

■ Press to STOP in storage m

MEDIA Menu Operation

USB Multimedia Playback Format (TSUMV59)

Media	File Ext.	CODEC		Remark
		Video	Audio	
Move	.avi	MJPEG	MP3, WMA, AAC MP2, PCM	Max Resolution And Frame Rate: 640*480@30fps Max Data Rate: 10 Mbps
		Xvid, MPEG-2, MPEG-4, DIVX		Max Resolution And Frame Rate: 1920*1080@30fps Max Data Rate: 20 Mbps
	.mp4	MPEG-2, MPEG-4, DIVX		
	.ts/ .trp	MPEG-2		
	.mkv/ .mov	MPEG-4		
	.mpg	MPEG-1, MPEG-2		
	.dat	MPEG-1	MP2	Max Resolution: 352*288 Max Data Rate: 20 Mbps
	.vob	MPEG-2		Max Resolution: 720*576 Max Data Rate: 20 Mbps
	.rm/ .rmvb	RV8, RV9, RV10	COOK	Max Resolution And Frame Rate: 1280*720@30fps Max Data Rate: 10 Mbps
Music	.mp3	—	MP3	Sample Rate: 8K~48KHz Bit Rate: 16K~320Kbps Channel: Mono/Stereo
	.wma	—	WMA	Sample Rate: 18K~48KHz Bit Rate: 32K~442Kbps Channel: Mono/Stereo
	.m4a/ .aac	—	AAC	
Photo	.jpg/ .jpeg	Progressive JPEG		Max Resolution: 8195*8195
		Baseline JPEG		Max Resolution: 15360*8640
	.bmp	--		Max Resolution: 9600*6400 Pixel Depth: 1/4/8/16/24/32 bpp
	.png	Non-Interlaced		Max Resolution: 9600*6400
		Interlaced		Max Resolution: 1800*1800

Note:

- 1) Licenses are required for H.264, Divx, MPEG-LA, WMV, MP3, WMA, AAC and AC3
- 2) Support hard disk, the maximum storage capacity is 500G
- 3) Folder in support of greatest is 30
- 4) Each folder in support of the largest number of documents is 5000
- 5) File system: FAT16, FAT32, NTFS

Trouble Shooting

Before consulting service personnel, check the following chart for a possible cause of the trouble you are experiencing and for a solution.

PROBLEM	SOLUTION
TV will not turn on	<ul style="list-style-type: none">● Make sure the power cord is plugged in.● The batteries in the remote control may be exhausted replace the batteries.
No picture, no sound	<ul style="list-style-type: none">● Check the interface cable between TV and antenna/cable TV.● Press the power button on the remote.● Press the AV/TV button the remote, then press the SOURCE button repeatedly to select the TV sources.
Poor picture, sound OK	<ul style="list-style-type: none">● Check the interface cable between TV and antenna/cable TV.● Try another channel. The station may have broadcast difficulties● adjust the brightness/contrast options in the Video menu.
Picture OK, Poor sound	<ul style="list-style-type: none">● Sound may be muted. Press the MUTE button on the remote,● press the TV button on the remote, then press the VOL+button to increase the volume.
Audio noise	<ul style="list-style-type: none">● Move any infrared equipment away from the TV.

The TFT LED panel uses a panel consisting of sub pixels which require sophisticated technology to produce. However, there may be few bright or dark pixels on the screen. These pixels will have no impact on the performance of the product.



WARNING: You should not dispose of this device with your household waste. A selective collection system for this type of product is implemented by your local authorities. Please contact your local authorities to find out how and where collection takes place. These restrictions apply because electrical and electronic devices contain dangerous substances that have harmful effects on the environment or on human health and must be recycled.

Note : Product design and Technical parameters may be change without notice. This mainly concerns parameters technical, software and user manual present. User's Manual is a general orientation on service product. Manufacturer and distributor do not assume any responsibility as compensation for any inaccuracies errors in the descriptions appearing in this user manual.

MANTA S.A. declares that the 19LFN88L TV is compliant with the European Parliament and Council Directive 2014/53 / EU of 16 April 2014 on the harmonization of the laws of the Member States regarding the provision of radio equipment on the market, and repealing Directive 1999/5 / EC. The full text of the declaration of conformity is available on the website www.manta.com.pl.